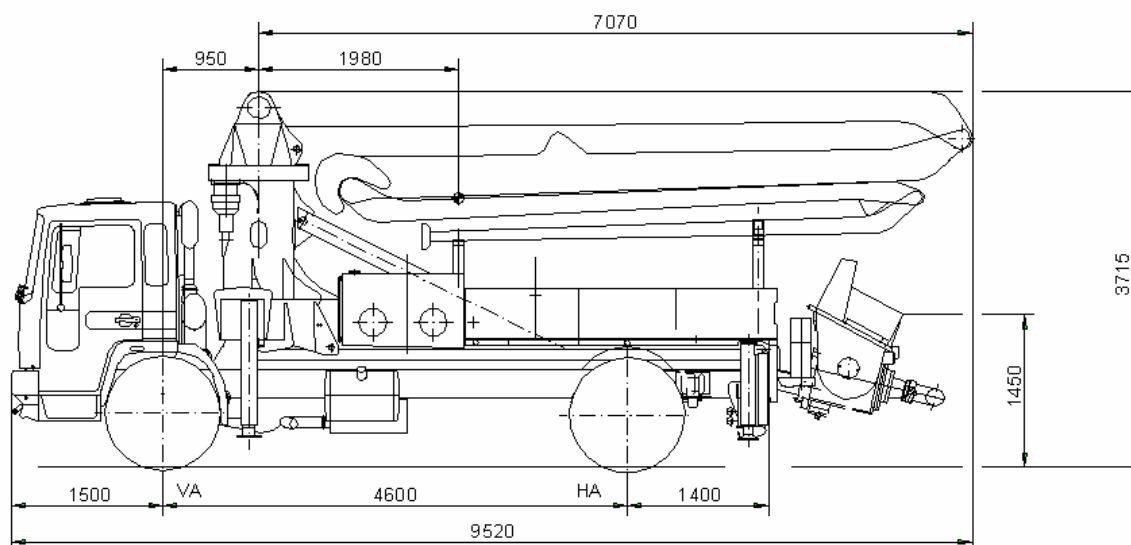


ELBA Concrete Distributor Boom M 24/28-4 Z



Construction

The ELBA Concrete Distributor Boom M 24/28-125, a 4-arm boom, is particularly advantageous for operation in halls with the superior kinematics of the Z-fold system.

Boom arms are made of high-quality steel in box-section construction, rendering high stability and low weight. Turntable equipped with a ball-bearing slewing ring ensuring steady operation of the distributor boom even at maximum reach in horizontal position. Powerful slewing gear, distributor boom can be slewed by 370 degrees.

The equipment mainly consists of a fixed base rigidly mounted on the dummy chassis, on which turns a turret supporting the boom elements with the concrete conveyor pipes.

Outriggers

The outriggers are full hydraulically operated. The front outrigger in X-execution are attached to the main frame, the rear outriggers in L-execution are attached to the longitudinal profiles. This outrigger system gives extra stability to the distributor boom in all working positions.

Concrete conveying pipelines

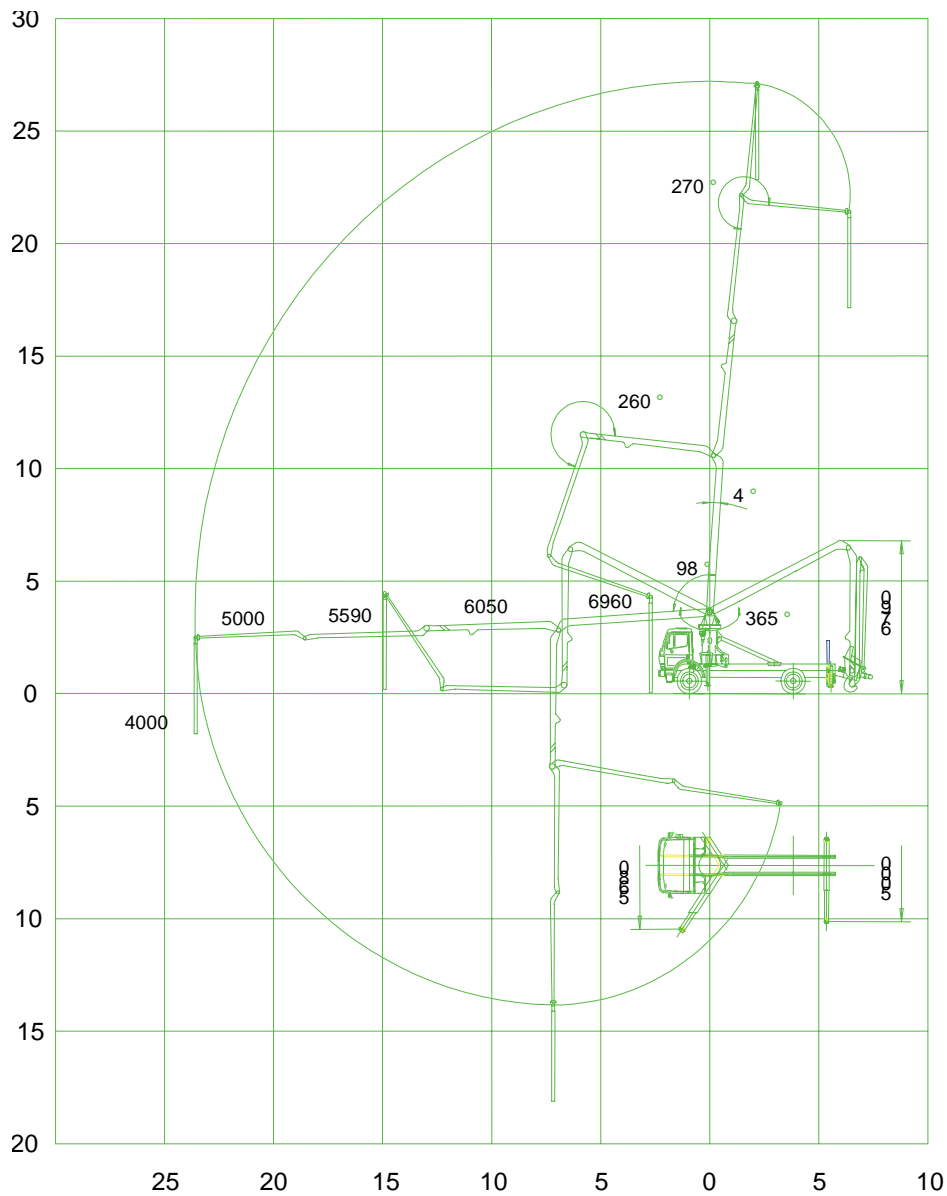
Concrete distributor boom is equipped with conveying pipes $\varnothing 125$ mm made of wear-resistant material and with an end distributor hose $\varnothing 125$ mm, 4 m long. All couplings, pipes and bends are in accordance with the German DIN 24118. Standard conveying pipeline lead near boom sections for less torsion and centrally through boom joints.

Power and Controls

All distributor boom functions are hydraulically operated. The distributor boom is powered by an oil pump of the hydraulic system of the concrete pump. Distributor boom operated by a hydraulic control block with manual or remote control.

Chassis requirement

2-axle truck 4x2
Wheelbase 4500 mm
Gross weight 20 t



Technical Data

Concrete pipeline-diameter	125 mm	Outrigger spread, front	5,72 m
Horizontal reach	23,6 m	Outrigger spread, rear	5,00 m
Max. vertical reach	27,6 m	Max. outrigger pad pressure	160/120 kN
End hose	4 m		
Slewing range	365 °		
Hydr. Working pressure	340 bar		

Technische Änderungen vorbehalten.
Subject to technical changes.

Sous réserves de modifications techniques.
Sujeto a modificaciones técnicas.